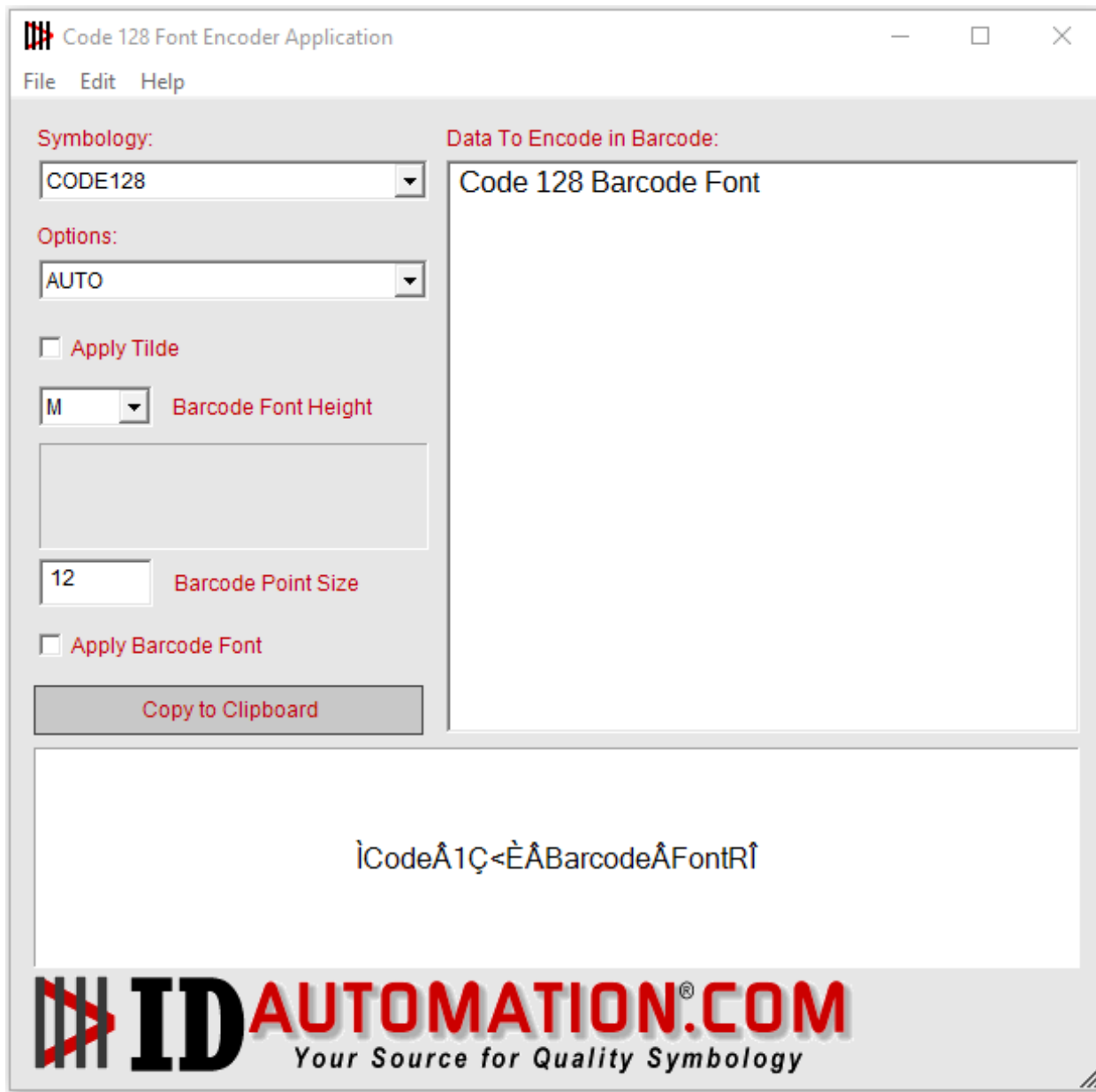


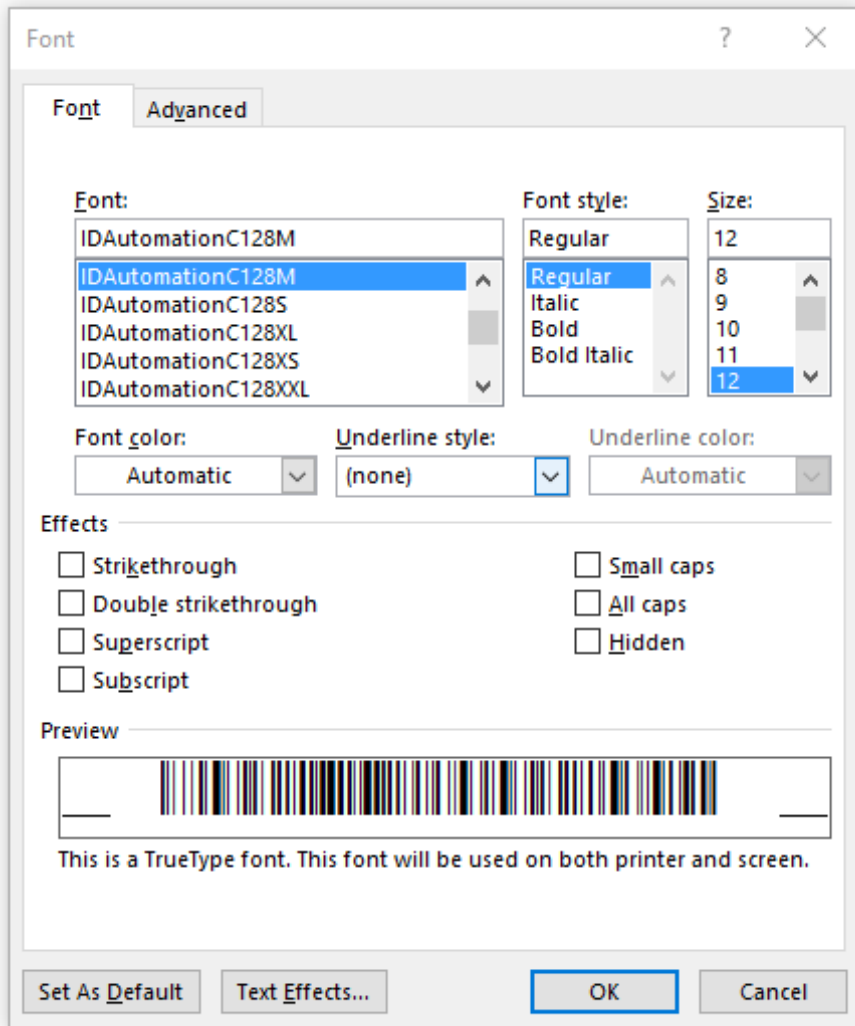
# Code 128 Font Embedding Example

This example shows the following data "[Code 128 Barcode Font](#)" embedded as a font into a PDF Document. First the data is encoded using the [Font Encoder Software Application](#).

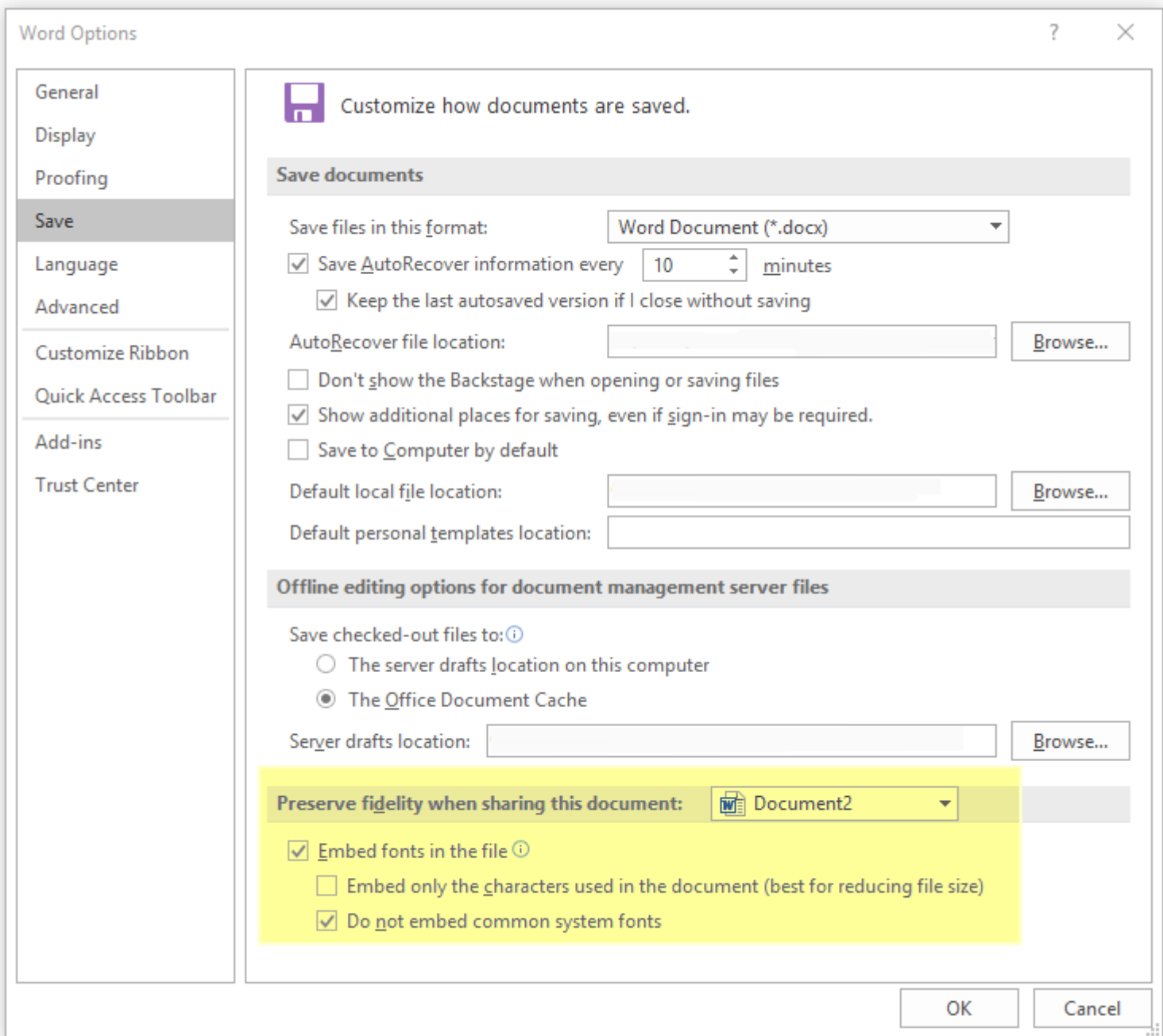


\* Embedding a barcode into a PDF document requires [Developer License](#)

Taking the encoded data string “ `Code1Ç<ÈBarcodeFontR` ”, the barcode font will be applied below:

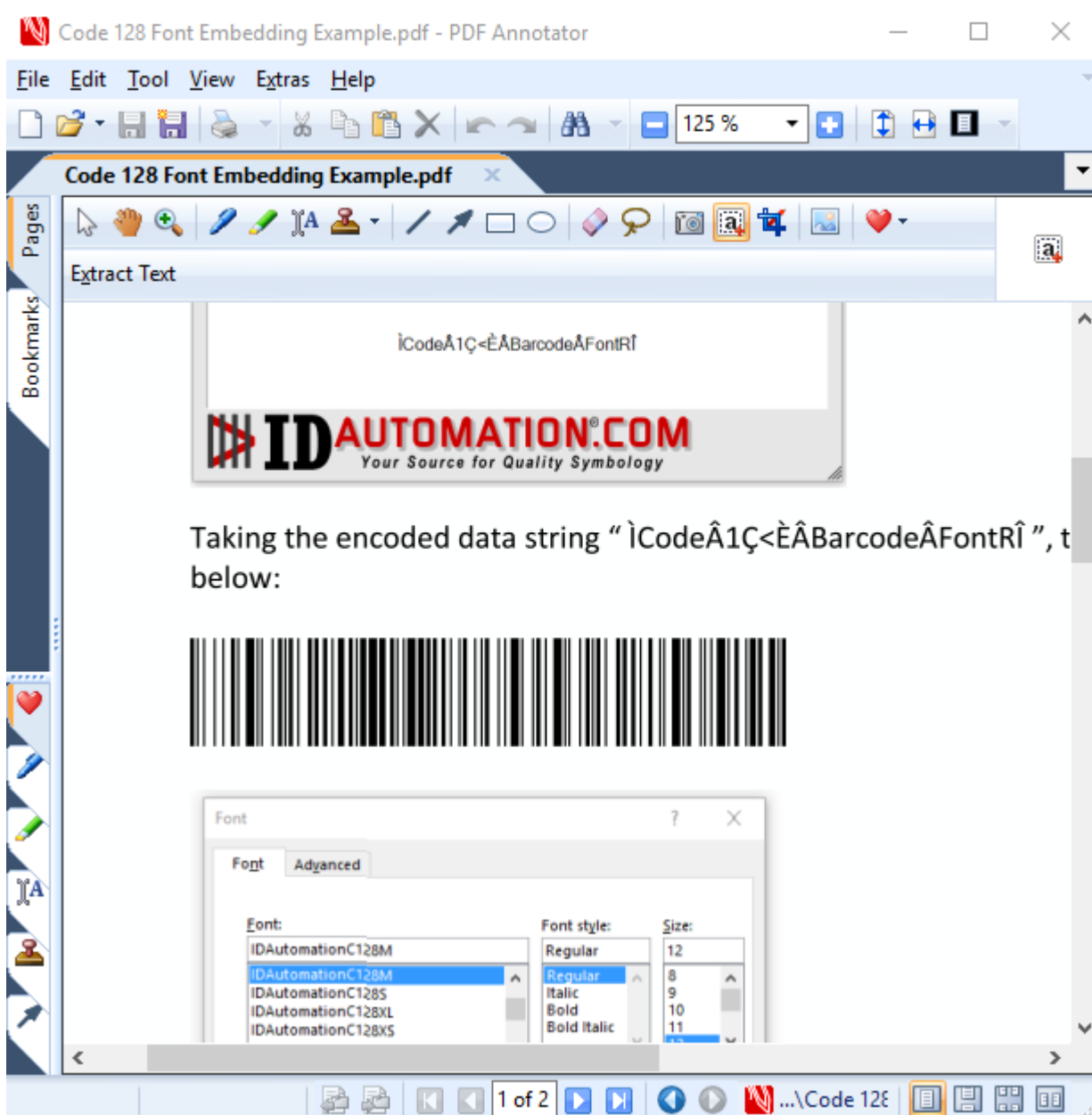


In Microsoft Word, go to File > Options > Save and check the Embed Fonts in this Document.



\* Embedding a barcode into a PDF document requires [Developer License](#)

The document is now ready to be saved as a PDF and other users will be able to see the barcode embedded in the document.



\* Embedding a barcode into a PDF document requires [Developer License](#)